



Homesite Package

Crystal Springs Road - Block D, Lot 9

Steep hills good people and a lake.

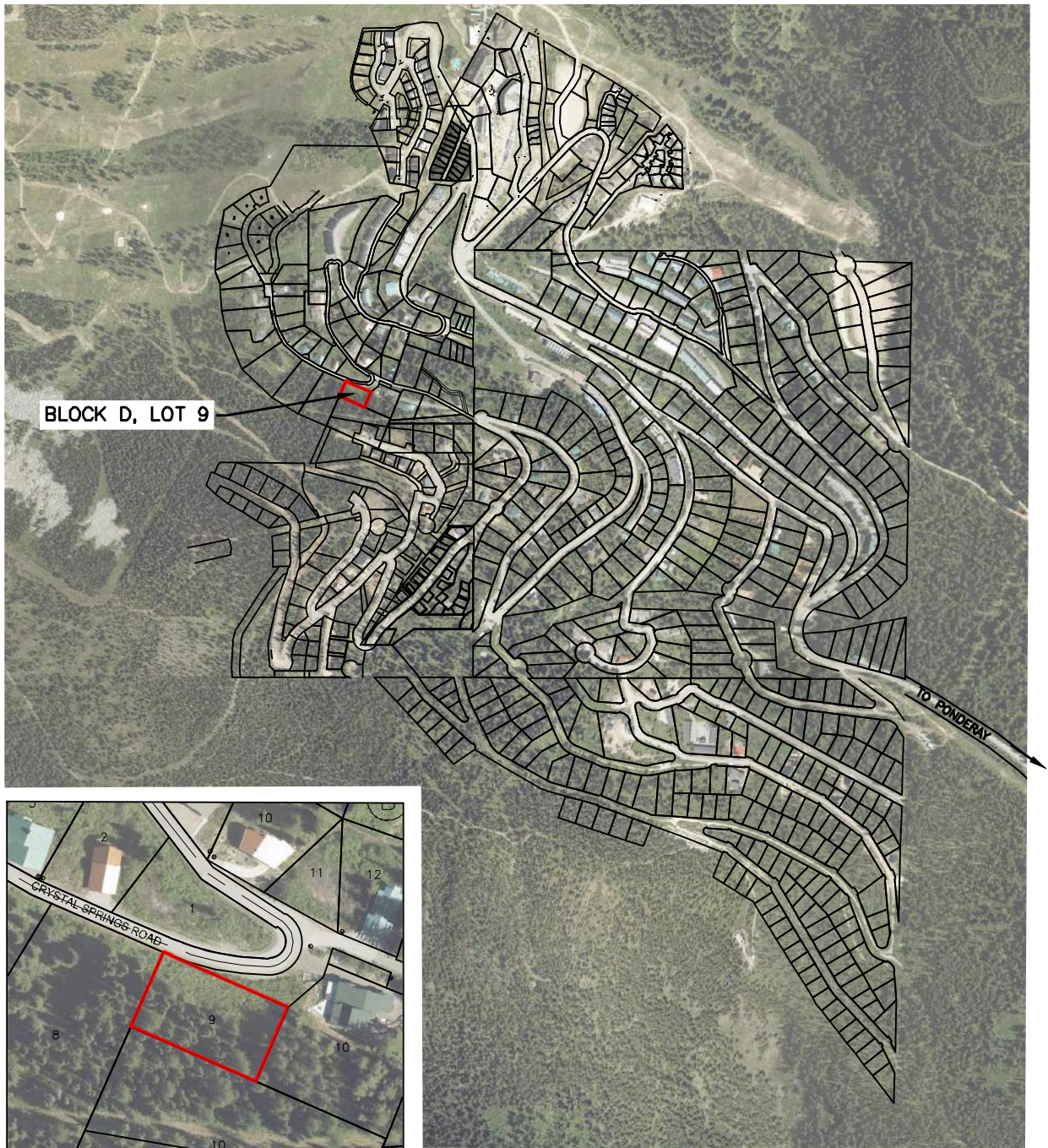
schweitzer.com

877.487.4643 | 208.263.9555

10000 Schweitzer Mountain Rd. Sandpoint ID 83864

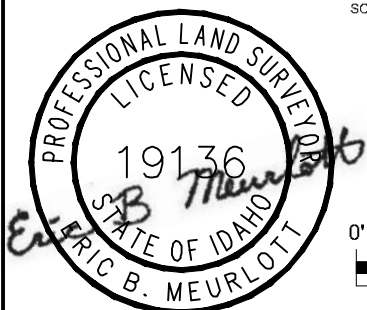
BLOCK D, LOT 9

LOCATED IN A PORTION OF SECTION 20,
TOWNSHIP 58 NORTH, RANGE 2 WEST, BOISE MERIDIAN,
BONNER COUNTY, IDAHO



BLOCK D, LOT 9

SCALE: 1" = 200'



0' 500' 1000' 2000'

SCALE FEET



T-O ENGINEERS

7950 MEADOWLARK WAY, SUITE A
COEUR d'ALENE, IDAHO 83815

PHONE: (208) 762-3644

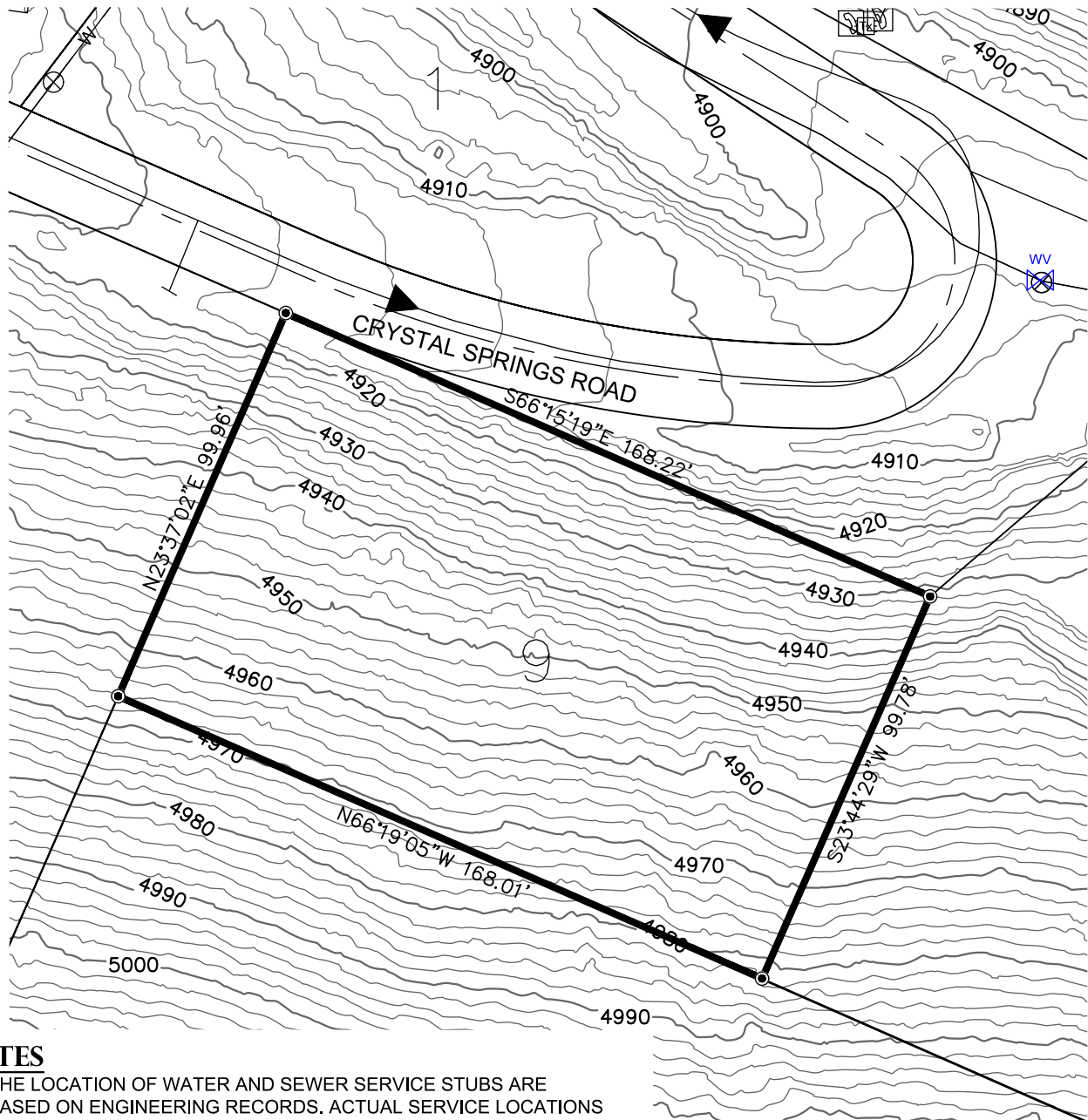
FAX: (208) 762-3708

E-FILE: 210383_V_Lot Inventory Base_BLOCKS B & Drawing: 7/1/22

JOB: 210383

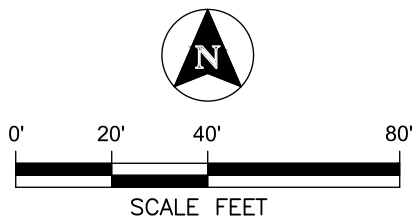
BLOCK D, LOT 9

LOCATED IN A PORTION OF SECTION 20,
TOWNSHIP 58 NORTH, RANGE 2 WEST, BOISE MERIDIAN,
BONNER COUNTY, IDAHO



NOTES

1. THE LOCATION OF WATER AND SEWER SERVICE STUBS ARE BASED ON ENGINEERING RECORDS. ACTUAL SERVICE LOCATIONS COULD NOT VERIFIED. CONTACT LOCAL UTILITY PROVIDER FOR UTILITY ACCESS FOR THE PROPERTY.
2. ABOVE GROUND GAS, ELECTRIC, COMMUNICATIONS PEDESTALS WERE FIELD LOCATED AS SHOWN.



T-O ENGINEERS

7950 MEADOWLARK WAY, SUITE A
COEUR d'ALENE, IDAHO 83815

PHONE: (208) 762-3644

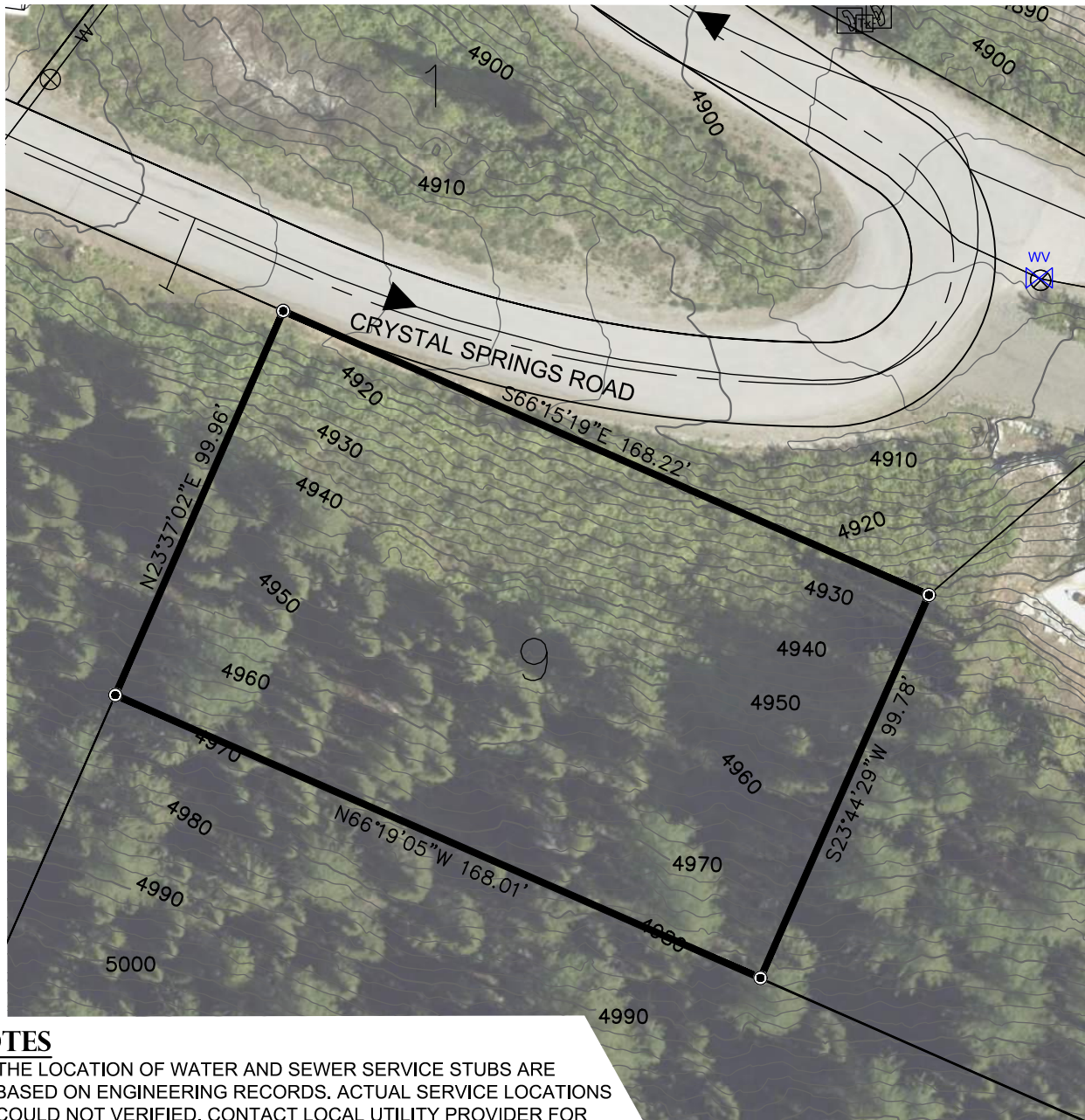
FAX: (208) 762-3708

E-FILE: 210383_V_Lot Inventory Base_BLOCKS B & D.DWG: 6/30/22

JOB: 210383

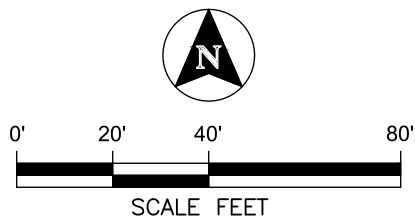
BLOCK D, LOT 9

LOCATED IN A PORTION OF SECTION 20,
TOWNSHIP 58 NORTH, RANGE 2 WEST, BOISE MERIDIAN,
BONNER COUNTY, IDAHO



NOTES

1. THE LOCATION OF WATER AND SEWER SERVICE STUBS ARE BASED ON ENGINEERING RECORDS. ACTUAL SERVICE LOCATIONS COULD NOT VERIFIED. CONTACT LOCAL UTILITY PROVIDER FOR UTILITY ACCESS FOR THE PROPERTY.
2. ABOVE GROUND GAS, ELECTRIC, COMMUNICATIONS PEDESTALS WERE FIELD LOCATED AS SHOWN.



T-O ENGINEERS

7950 MEADOWLARK WAY, SUITE A
COEUR d'ALENE, IDAHO 83815

PHONE: (208) 762-3644

FAX: (208) 762-3708

E-FILE: 210383_V_Lot Inventory Base_BLOCKS B & D.DWG: 6/30/22

JOB: 210383